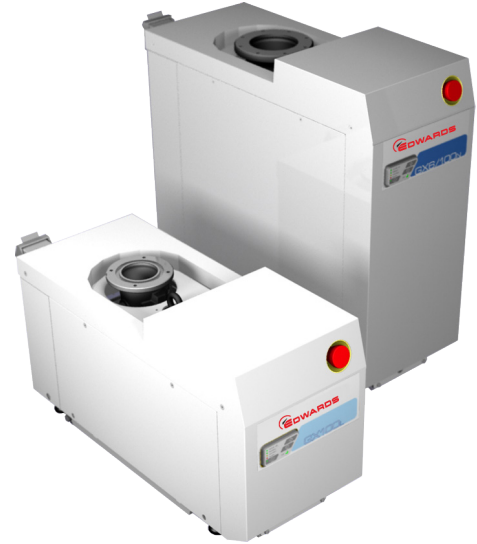


GX next generation dry pumps

The GX dry vacuum pump series sets new standards for zero maintenance between major overhauls. Improved efficiency lowers the cost of ownership and provides continuous pumping duty throughout the pressure range. GX dry pumps include Ethernet connectivity allowing key data to be viewed via web pages, as well as a comprehensive set of networking options to assure continuous pump availability.

GX pumps are available in a wide range of peak speeds and variants to address applications from clean through to medium-duty processes. A modular design allows users to configure GX dry pumps to suit individual fab requirements. A compact footprint allows installation options including on-tool, close proximity, or remote.



Features and benefits

- Reduced cost of ownership
 - Low power consumption
 - Zero preventative maintenance
- Flexible installation options
 - Small and light for easy installation
 - On-tool, close proximity, or remote
- Consistent pumping performance globally
 - Pumping speed identical at 50 and 60 Hz
- Reduced ambient noise
 - Only 55 dB(A)
- Wide range of peak speed
 - 100, 600 and 800 m³h⁻¹

Specification

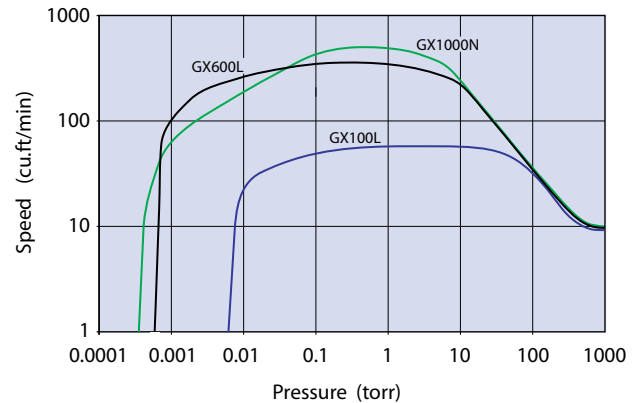
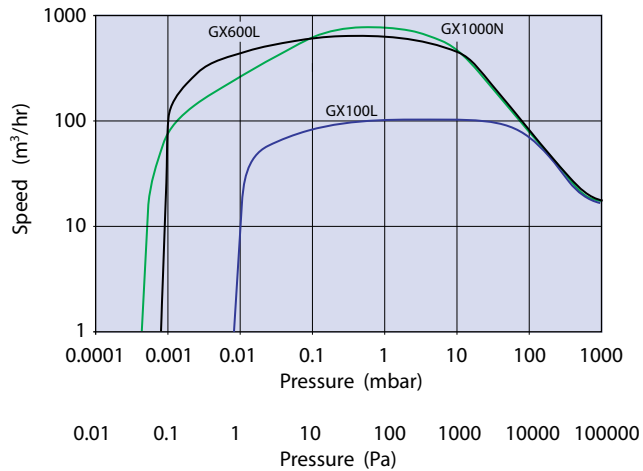
| | GX | 100 | 600 | 1000 |
|--|--------------------------------|----------------------|----------------------|----------------------|
| Performance | | | | |
| Peak speed | m ³ h ⁻¹ | 105 | 620 | 800 |
| | cfm | 62 | 365 | 471 |
| | l min ⁻¹ | 1750 | 10333 | 13333 |
| Ultimate pressure | mbar | 5.00E ⁻⁰³ | 7.00E ⁻⁰⁴ | 1.00E ⁻⁰³ |
| | torr | 3.75E ⁻⁰³ | 5.25E ⁻⁰⁴ | 7.50E ⁻⁰⁴ |
| | Pa | 0.50 | 0.07 | 0.10 |
| Power at 700 torr exhaust | | | | |
| Ultimate | kW | 1.0 | 1.6 | 1.6 |
| Green Mode | kW | 0.05 | 0.05 | 0.05 |
| Water* | | | | |
| Water flow | slm | 1.0 | 2.0 | 2.0 |
| Nitrogen | | | | |
| L Variant | slm | 0 | 0 | N/A |
| N Variant** | slm | 4 to 39 | 4 to 39 | 4 to 39 |
| Installation details | | | | |
| Footprint (excl. exhaust) | m ² | 0.195 | 0.195 | 0.195 |
| Weight | Kg | 120 | 220 | 230 |
| Inlet connection | | ISO63 | ISO100 | ISO100 |
| Outlet connection | | NW25 | NW25 | NW25 |
| Noise at ultimate | dB(A) | <55 | <55 | <55 |
| * Flow with optional Constant Flow Valve fitted | | | | |
| ** Nitrogen purge can be manually adjusted to a maximum flow of 39 slm | | | | |

Applications

| Load Lock | Transfer | Metrology | Lithography | PVD Process | PVD Pre-Clean | RTA | Strip/Ashing | Oxide Etch | Silicon Etch | Metal Etch | Implant Source | HDP-CVD | RTP | SACVD | MOCVD | PECVD | LPCVD | ALD | |
|-------------------------|----------|-----------|-------------|-------------|---------------|----------------|--------------|------------|--------------|------------|----------------|----------------------------------|-----|-------|-------|-------|-------|-----|--|
| iXH can be used | | | | | | | | | | | | iXH recommended | | | | | | | |
| GX can be used | | | | | | GX recommended | | | | | | | | | | | | | |
| iXL120(N) | | | | | | | | | | | | | | | | | | | |
| Clean Applications | | | | | | | | | | | | Harsh Applications | | | | | | | |
| Non-reactive gases used | | | | | | | | | | | | Corrosive or reactive gases used | | | | | | | |

Contact Edwards for additional technical information on a particular application.

Speed curves



Designed for Energy Efficiency

- High performance motors and inverter drives
 - Low operating power consumption
 - Lower power standby mode using Green Mode
- Nitrogen dilution can be tuned to the application requirement
 - Minimizes gas usage
- Highly efficient cooling
 - High conductivity materials and good design enables low water flow
- Precision ceramic bearings
 - Very high load capability for reliability
 - Low noise and vibration

Ethernet Connectivity

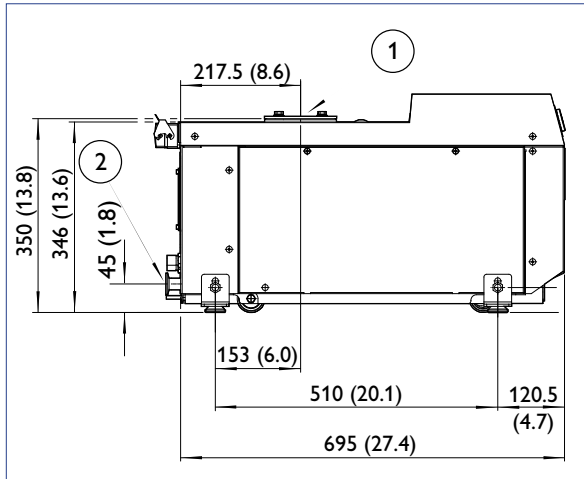
The GX Series includes unique web serving functionality that allows viewing of key parameters through a simple Ethernet connection and browser.

A user can connect to the pump using a browser and pump address to view a range of information, such as:

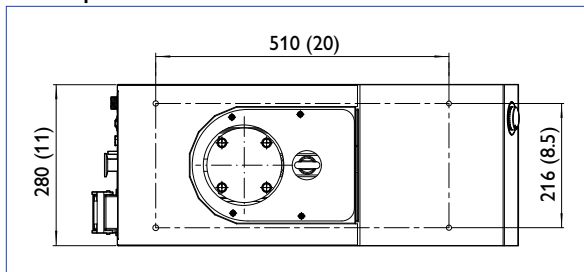
- Operating status
- Key parameters
- Parameter setpoints
- Alert summary

Dimensions - mm (inches)

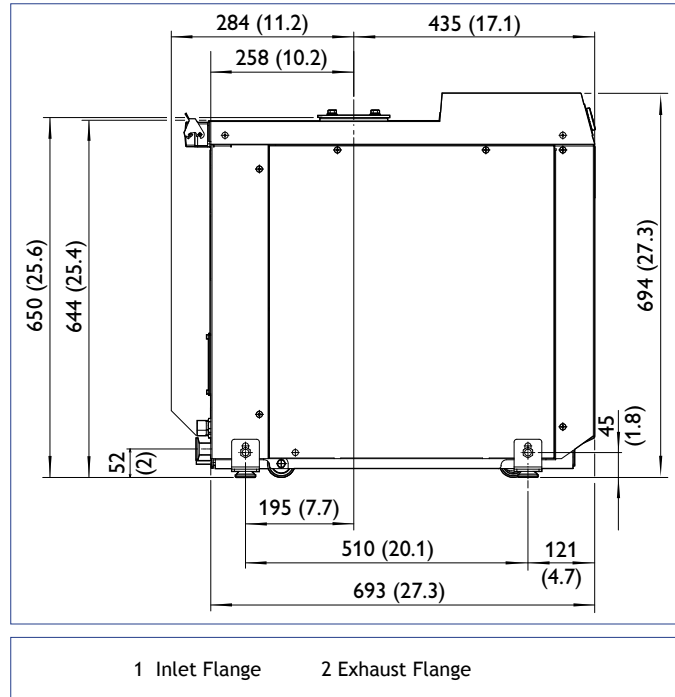
GX100 Side View



GX Top View



GX600, 1000 Side View



1 Inlet Flange 2 Exhaust Flange

Ordering Information

| | | | | | |
|---------------------------|-----------|---------------------------|-----------|----------------------------|-----------|
| GX100L 200 - 230V 50/60Hz | A54710958 | GX600L 200 - 230V 50/60Hz | A54730958 | GX1000N 200 - 230V 50/60Hz | A54781958 |
| GX100L 380 - 460V 50/60Hz | A54710959 | GX600L 380 - 460V 50/60Hz | A54730959 | GX1000N 380 - 460V 50/60Hz | A54781959 |
| GX100N 200 - 230V 50/60Hz | A54711958 | GX600N 200 - 230V 50/60Hz | A54731958 | GX100TI 200 - 230V 50/60Hz | A54746958 |
| GX100N 380 - 460V 50/60Hz | A54711959 | GX600N 380 - 460V 50/60Hz | A54731959 | | |

Edwards continually updates its products to match the evolving needs of the semiconductor industry. Specifications given here are subject to change without notice.

Global contacts

EUROPE

UK Crawley +44 1293 528844
 UK (local rate) 08459 212223
 Belgium Brussels +32 2 300 0730
 France Paris +33 1 4121 1256
 Germany Munich 0800 000 1456
 Italy Milan +39 02 48 4471

USA

Niagara (toll free) +1 800 848 9800

BRAZIL

Sao Paulo +55 11 3952 5000

ISRAEL

Qiryat-Gat +972 8 681 0633

ASIA PACIFIC

China (toll free) +86 400 111 9618

India, Pune +91 20 4075 2222

Japan, Yachiyo +81 47 458 8831

Korea, Bundang +82 31 716 7070

Singapore +65 6546 8408

Taiwan R.O.C. Jhunan Town +886 3758 1000



WWW.EDWARDSVACUUM.COM

info@edwardsvacuum.com

Publication Number: A53710895, Issue D
 © Edwards Limited 2013. All rights reserved.
 Edwards and the Edwards logo are trade marks of Edwards Limited.